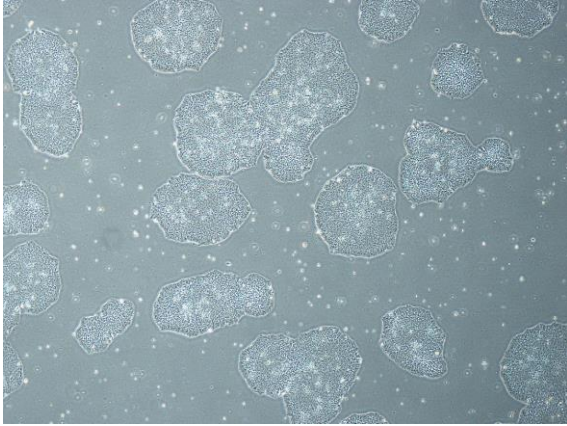
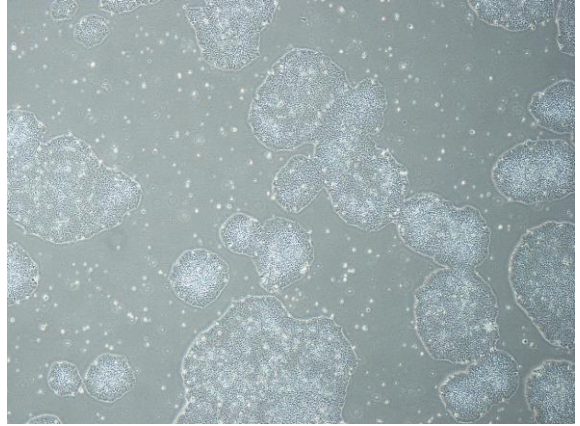


【 CiRA-j-1400 】 Morphology of iPSC colonies

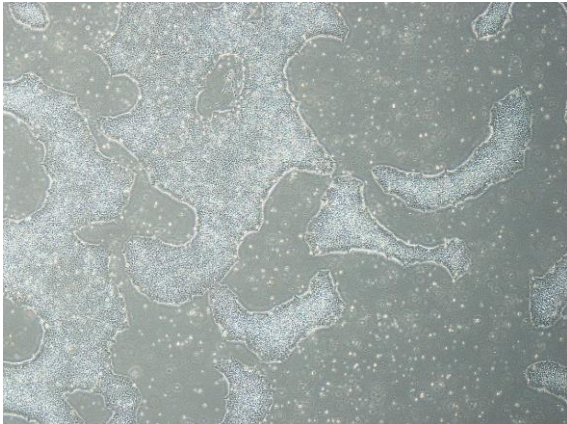
CiRA-j-1400-A: passage-3



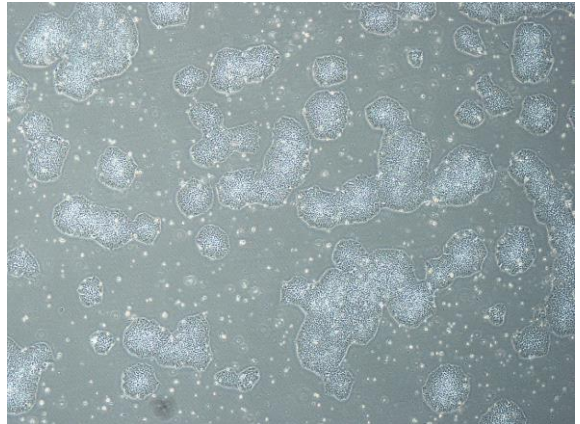
CiRA-j-1400-B: passage-3



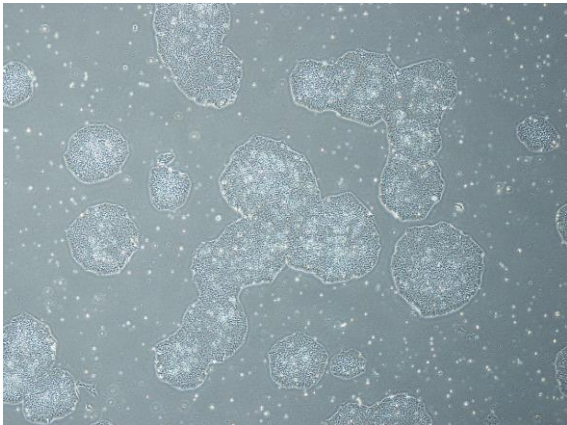
CiRA-j-1400-C: passage-4



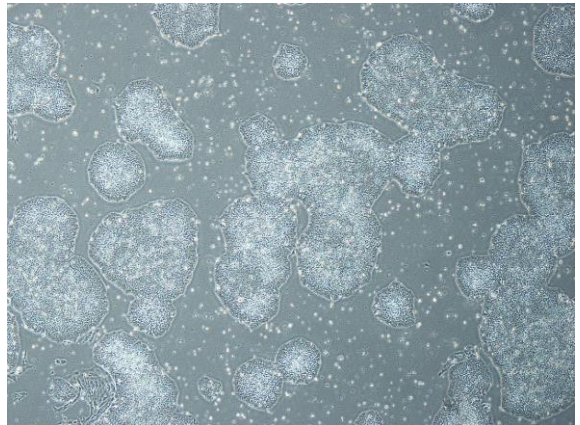
CiRA-j-1400-D: passage-3



CiRA-j-1400-E: passage-3



CiRA-j-1400-F: passage-3



(All images were captured at 4x magnification)